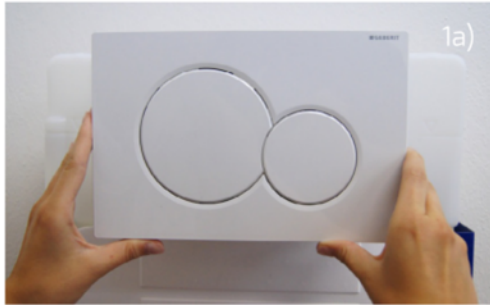


TOILET SAVER INSTALL FOR 2-BUTTON SYSTEMS



1.

Remove the 2-Button control cover by pulling at the bottom of the cover first.



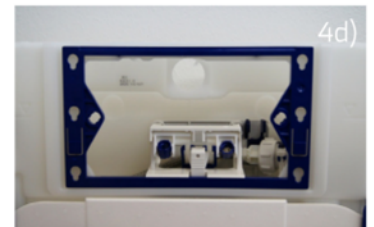
2.

Remove the front panel. For more information about how to disassembly the product, please read the product documentation.



3.

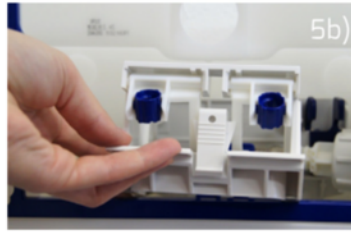
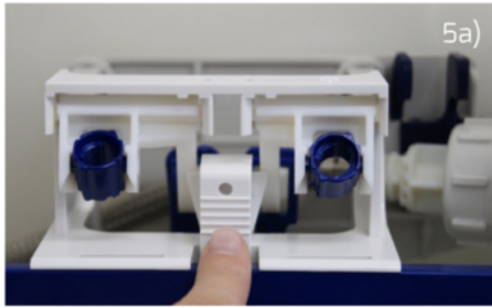
Remove the rear panel. For more information about how to disassembly the product, please read the product documentation.



TOILET SAVER INSTALL FOR 2-BUTTON SYSTEMS

4.

Remove the control panel. For more information about how to disassembly the product, please read the product documentation.



5.

Instal Toilet Water Saver. Twist and lift blue mechanism piece out of the way and insert and hang Toilet Water Saver inside overflow tube.



Adjust Toilet Water Saver ends so they get hooked against overflow tube. The position of Toilet Water Saver will be more solid. Position the blue mechanism piece back at it's place.



Assembly the 2-Button flush system back together by reversing the previous steps. Make sure mechanical parts fit in together well. Dont use excessive force, you might break or damage the mechanism. Pieces fit together very well.



DO YOU NEED HELP? CALL 561-504-4790